




BLACK BEAR

To: Team Leader of Assessments Alpine Resorts Team
Department of Planning, Housing and
Infrastructure
Shop 5A, 19 Snowy River Avenue,
PO Box 36,
Jindabyne, NSW, 2627
E: alpineresorts@planning.nsw.gov.au
T: +61 2 6448 8500

	Department of Planning Housing and Infrastructure
Issued under the Environmental Planning and Assessment Act 1979	
Approved Section 4.56 Modification Application	
No MOD 24/14453 (DA 10064 MOD 4)	
Granted on the 21 November 2024	
In respect to DA 10064	
Signed M D'souza	
Sheet No	102 of 102

Modification of Development Consent 24/14453 (MOD 4)

November 4, 2024

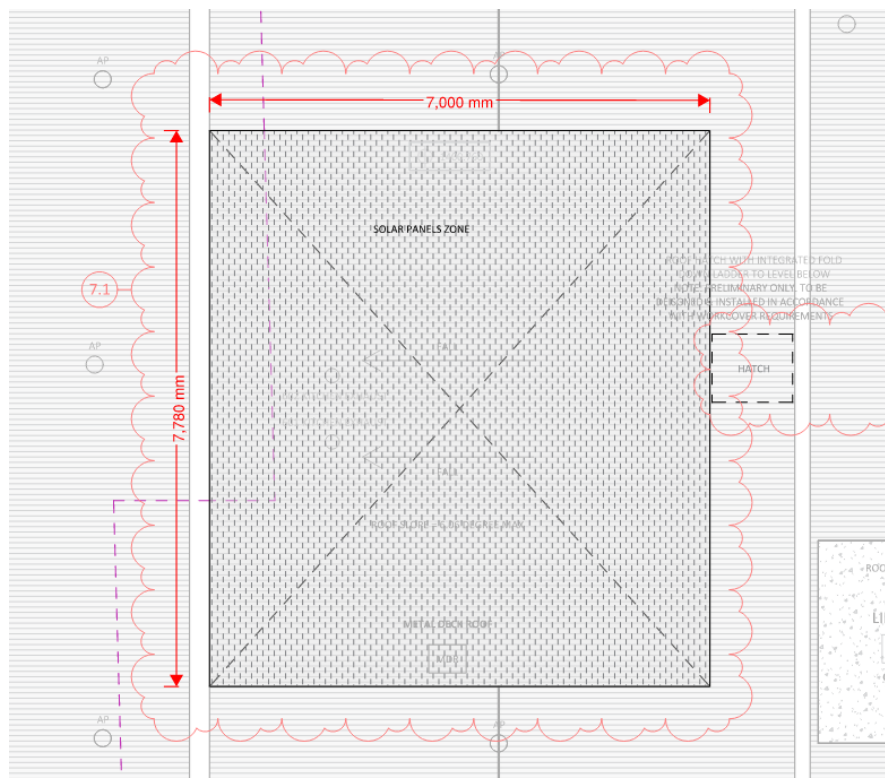
Dear Mark

We, Hidali Pty. Ltd., refer to the recent email request for additional information (dated 30.10.2024) application for modification of Development Consent No. 10064 (**MOD 4**).

To answer queries raised in Golden Eagle Apartment and Hi-Noon Ski Lodge's submission letter:

a) of solar panel overall dimensions in plan and section

The overall dimensions in plan will be no larger than the approved pop-up roof, which is 54.5 m² (7.78m east-west by 7m north-south). Please see the snapshot below for reference:



b) of any solar panel mounting or subframe details;

The installation is a slim subframe system and solar panels, laid parallel to the roof sheeting which will be less than 140mm in depth. Reference images from supplier:

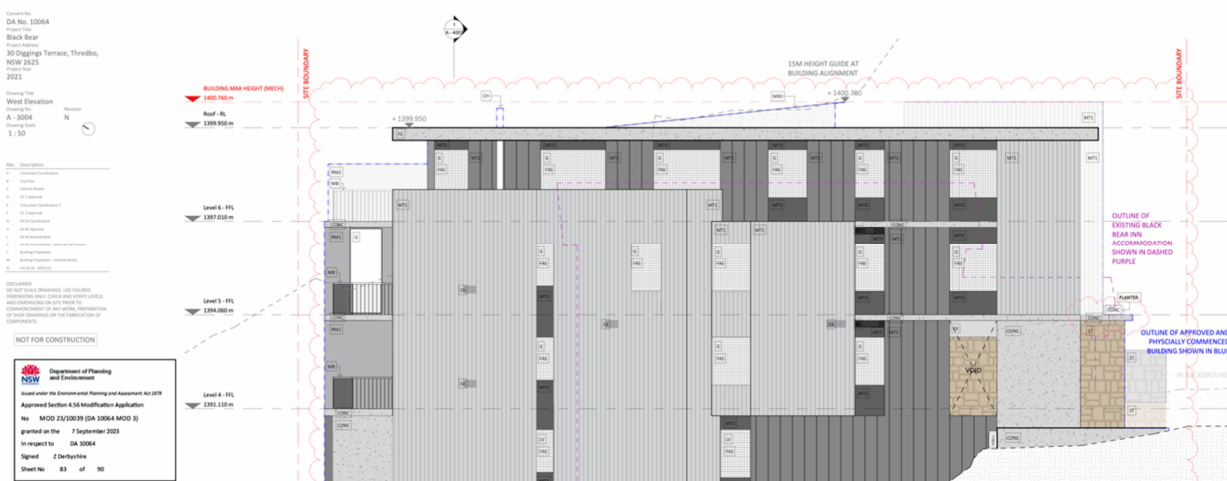


c) that installation of the solar panels and/or their mounting systems and/or their general arrangement, will not result in an increase in building height above the Max RL datum of 1400.760m.

We confirm that we are not proposing any height changes – all proposed changes are within approved boundaries and height.

We would also like to point out that the roof is pitched towards the north, with the high point of the roof being closer to Diggings Terrace. We believe Hi-Noon Ski Lodge or Golden Eagle Apartment will not be looking at solar panels as they are falling away from view.

See A-3004 West Elevation for roof direction, note: Diggings Terrace on right side of page.



Should you have any questions, please contact me at any time on 0418 625 404.

Yours Sincerely,



John Fielding
Director
Hidali Pty Ltd